

The Domino S200+

Compact, highly versatile scribing laser designed for producing high-quality codes on demanding materials and production lines.



Key Benefits:

High Quality Codes

- Consistent, permanent clear codes, from simple single-line batch codes to multiple lines with real time data
- Flexible code design, including the ability to mark serial numbers, batch codes, bar codes, 2D codes, fonts and graphics in any orientation
- Precise, letter-quality codes without compromise on production speeds
- Produces clear discrete codes and legible Asian characters, even when as small as 2 mm
- Produces crisp codes on PET without piercing the product

High Reliability

- Designed for use in demanding production environments
- Low maintenance

Easy to Install

- Small, light laser head can be mounted into tight production spaces and easily adjusted
- Compact control unit can be shelf-mounted for best positioning on production lines

Simple to Use

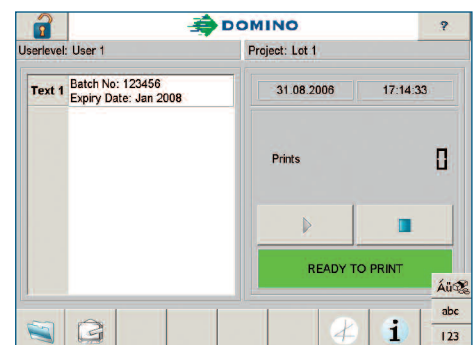
- Visible red aiming beam simplifies laser focusing and code position adjustment
- Colour touch-screen interface with familiar function keys for quick code set up and editing

Main Features:

- Designed to IP55
- Blue laser tube technology
- High-resolution optics
- Laser beam steered by unique scanning technology
- Intuitive Windows® based software
- Axial beam output option



High quality codes



Basic User Interface for simple operation

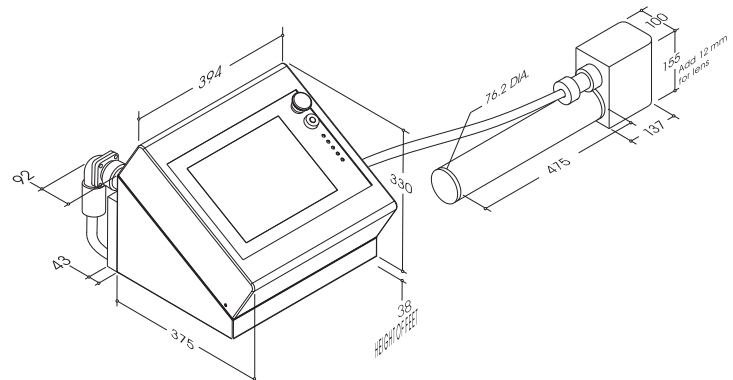
Technical Specification:

| | S200+ | |
|-----------------------------|--|-------------------------------------|
| Laser Type | Sealed CO ₂ Laser | Sealed CO ₂ Laser (Blue) |
| Laser Power | 20W | 17W |
| Marking Features | | |
| Characters per Second | 400* | 300* |
| Product Line Speed | 240m/min (787ft/min) * | 240m/min (787ft/min) * |
| Number of Lines of Text | As many as desired, mixed sizes | |
| Character Height | 0.8 – 76 mm (0.03 – 3.0") | |
| Fonts | 24 fonts, multi-language including full Unicode | |
| Marking Options | Text, logos, bar codes, 2D codes, graphics, automatic serial numbering, batch coding and real time clocks | |
| Marking Field | 56 x 56mm (2.2 x 2.2"), 89mm (3.5") | |
| & Focal Length | 76 x 76mm (3.0 x 3.0"), 127mm (5.0") | |
| User Interface | 12.1" colour touch screen with WYSIWYG and SVGA quality (800 x 600 mm resolution) display control language in English, German, French, Spanish, Dutch, Danish, Polish, Portuguese, Italian, Hungarian, Korean, Russian, Swedish, Chinese (Simplified), Czech, Finnish and Japanese | |
| Operating System | Microsoft Windows® XPe | |
| Laser Head | Stainless steel (304) | |
| Weight & Dimensions | 8.18 kg (18 lbs), L x H x W: 612 mm x 167 mm x 100 mm (24.09 x 6.57 x 3.94") including lens | |
| Control Cabinet | Stainless steel (304) | |
| Weight & Dimensions | 17.69 kg (39 lbs), D x H x W: 418 x 368 x 394 mm (16.46 x 14.49 x 15.51") | |
| Conduit Length | 3 m (9.84 ft), 6 m (19.69 ft) optional | |
| Inputs & Outputs | | |
| Product Detect Inputs | NPN / PNP/ 12V - sensor | |
| Product Speed Detect | Quadrature shaft encoder | |
| Signal Inputs | External E-stop, interlock circuits, 9 configurable user inputs | |
| Signal Outputs | Alarm, ready signal, fume extraction control, cooling air solenoid control, E-stop status, print complete, 3 configurable user outputs | |
| Interfaces | PS2, VGA, RS232, Ethernet, USB, IDE | |
| Electrical Requirements | 90 – 264 VAC, 47 – 63 Hz, 460 VA maximum | |
| Environment | Cooling Compressed air required typically @3.5 SCFM (100 l/min), duty cycle and ambient temperature dependent | |
| Environmental Standard | IP55, CE mark | |
| Operating Temperature | 5 to 45° C (41 to 113° F) | |
| Operating Humidity | 10 – 95% non-condensing | |
| Options | Laser head mounting bracket, control cabinet stand, alarm beacon, fume extractor, air filtration kit | |

* Character generation and production speeds are substrate and code dependent

Dimensions

All dimensions in millimetres



Australia
Domino (Australia) Pty. Ltd.
1, Neutron Place
Rowville
Melbourne
Victoria 3178
Australia
Tel: + 61 3 9764 8485

Canada
Domino Printing
Solutions Inc.
2751 Coventry Road
Oakville
Ontario
L6H 5V9
Tel: + 1 800 387 7972

India
Domino Printech India
Private Limited
167, Udyog Vihar Phase I,
H.S.I.D.C Gurgaon -
122016 Haryana
Tel: + 91 124 500 7406

United Arab Emirates
Domino UK Ltd (Dubai)
PO Box 16984
Jebel Ali
Dubai
Tel: + 971 4 88 35003

United Kingdom
Domino UK Ltd
Bar Hill
Cambridge
CB23 8TU
Tel: + 44 1954 782 551

United States of America
Domino Amjet, Inc.
1290 Lakeside Drive
Gurnee
Illinois 60031
Tel: + 1 800 486 7414



www.domino-printing.com