

# Editor“ GT

Ink jet data and production line controller



data sheet



# Editor GT Ink Jet and Production Line Controller

With a thousand installations, the latest generation Domino Editor GT Windows® XP based controller has become an industry standard.

Editor GT combines data preparation tools with modular solutions for in-line ink jet printing of addresses, personalisation, numbers, barcodes and 2D codes. This is combined with integrated machine control of your production line. Any combination of Domino's range of ink jet printers, including multiple Bitjet+, Jet Array, L-Series and K-Series is supported.

## Key ink jet applications include:

- Stitching
- Binding
- Wrapping
- Folding
- Addressing & Mailing
- Inserting
- Web fed printing
- Sheet fed printing
- Plastic card personalisation



Desktop Controller

*Desktop PC appearance is subject to change*



Floor Standing Controller

# Addressing Module

The Domino Editor GT meets the needs for addressing and personalisation in applications including off/in-line mail table, bindery envelope/insert and wrapping production lines, and also offers a range of additional options and upgrades in order to meet more advanced requirements.

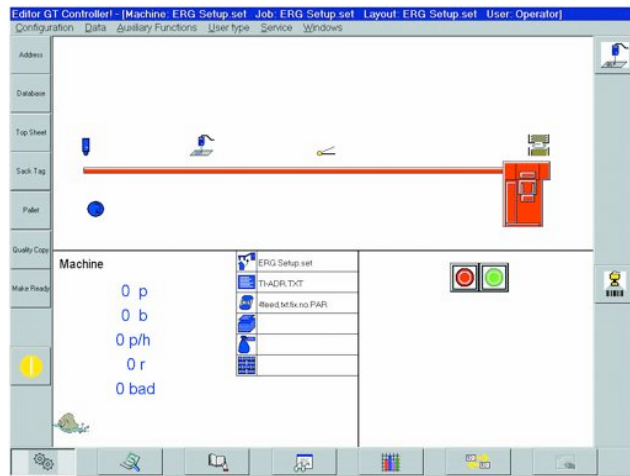
## Database Management

Data files can be received from all the commonly available database software packages, including the standard ASCII data in both fixed length or comma separated formats. Simple visual tools help guide the operator through formatting and then confirming the data configuration, prior to printing. When configured, the Editor GT's automatic make-ready capability ensures rapid set up and production.

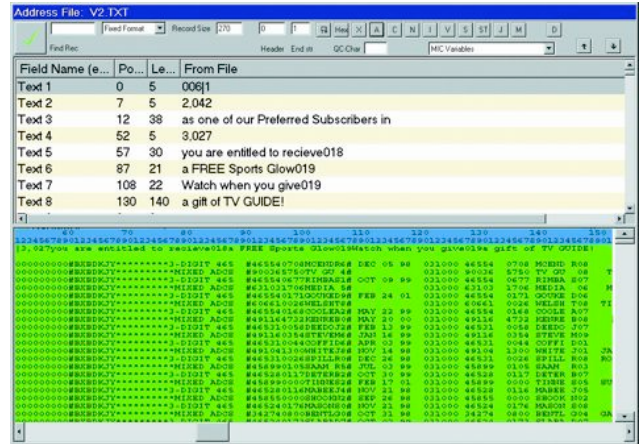
## Mail Sort Control

Options include feeder inhibit, conveyor surge or kicker and stacker control. Stacker control includes options for bundle compensation, slow down, reorder and divert. Standard interfaces are available for all the leading stacker manufacturers, otherwise the Editor GT control tools can be used.

When a product is diverted, based on the mail sort control setting, Editor GT can generate a line stop, automatically reorder the replacement, divert the replacement as a residue or reorder at the end of the production run.



Editor GT Line Set Up



Data Configuration Tool

## Multi-position Printing

Editor GT can track a product over multiple product transport/belt sections with backlash compensation. This enables matching in-line printing in multiple positions for applications such as inside/outside printing on bindery lines.

## Selective Control

Editor GT can provide selective feeder control for insert and signature feeders. This enables a custom product to be produced based on demographic data held within the data file. Interfaces exist for a number of leading bindery and wrapping line equipment suppliers.

## Camera Matching

Through integrating in-line with industry standard bar code, 2D, OCR, or RFID readers, Editor GT facilitates read, lookup and print, plus read and verify functions. Applications include complete re-confirmation of production integrity and pre-personalised item matching such as on-setting a plastic card with ink jet personalisation on a carrier sheet.

## Other Features

- Unicode character support
- User level system control
- Master data preparation station
- Multiple languages support
- Top sheet printing
- Windows XP supported fonts
- Basic numbering sequence generators
- Bag tag printing

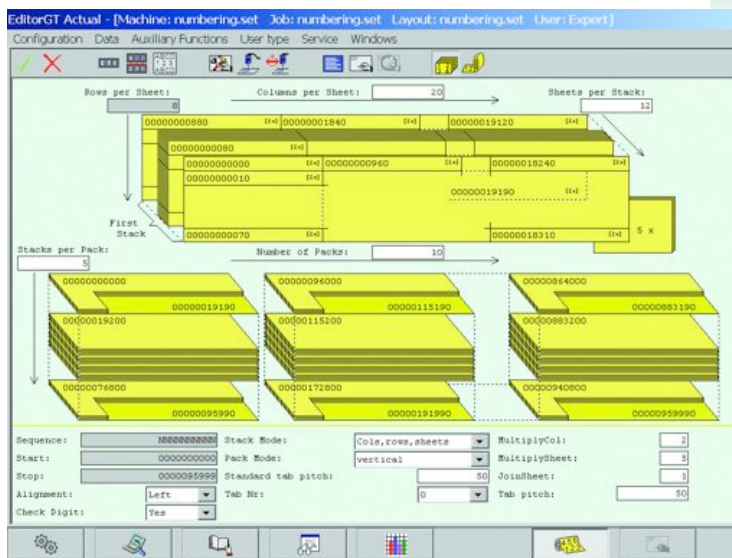
# Numbering Module

Editor GT's Numbering Module has been designed to simplify multiple print head set up for applications on tickets, wrappers, games cards, business forms and labels. It facilitates printing of alphanumeric, barcode, and 2D numbers and graphics for integration on sheet and web fed presses, re-winders and sheeting machines.

## User Interface

Data can either be supplied externally in the form of a data file, then formatted for printing, or can be generated using the Editor GT simple user facilities.

Customised for numbering applications, the operator is guided through the setup process with graphical representation of sheet/product layouts with an icon driven interface.



Numbering Sheet Layout

## Cut and Stack

After defining the sheet layout, number of tickets up and across and ticket book or packing box numbering sequence required, Editor GT will print the products in order to produce production output from the line in the configuration required. This removes the need for further manual handling and reduces processing error.

## Production Set Up

Compared to conventional mechanical numbering boxes, there is no requirement to change wheels for different numbering sequences, and setup across multiple numbering units can take place electronically, often within seconds without any machine intervention. Production efficiency is therefore enhanced when changing between jobs and between batches. For more complex numbering requirements, the simplicity of set up at a central control point reduces the risk of error.



## Print Confirmation

The system receives a separate signal from each ink jet printer after each print to confirm printing and data sequence. For customers that require an enhanced solution, an integrated camera recognition system can be utilised both to confirm print quality and data integrity.

## Gaming

Variable graphic combinations can be printed for gaming requirements using a data substitution table.

## Other Features

- User hierarchy configuration
- Master data preparation Station
- Comprehensive bar code and 2D library

# Technical Specification

## Controller

### Hardware options

- Industrial PC built into floor standing controller, IP 54 rated, with 15" Touch screen monitor
- Rack-able industrial PC system unit with 15" Touch screen monitor, 1024x768 pixels 433mm(L) x 177mm (H) x 375mm(W) (17" (L) x 7" (H) x 14.7"(W))
- Industrial desktop PC tower with 15" Flat Screen monitor

### Floor Standing Controller dimensions

- 737mm (L) x 1321mm (H) x 597mm (W)  
(29" (L) x 52" (H) x 23.5" (W))

### PC

- Latest spec Pentium PC, including Windows® XPe work station software
- USB Support
- CD-R/W
- Network Ready
- Serial ports for integration with cameras and scanners

### Power data

- 115/240 VAC 50/60 Hz

### Input/Output

- Up to 4 backlash compensated encoder input
- Up to 20 backlash compensated and divided encoder outputs for ink jets
- Up to 16 outputs for periphery: stacker, gates etc
- Up to 16 inputs for periphery: product detect, reorder etc
- Add-on I/O unit for feeder control

### Data Formats

- Flat Files
- Fixed length records
- Variable delimited records
- MS Access & Excel compatibility

### Printer Support

#### As standard up to:

- 20 Domino A-Series printers
- 8 Domino Bitjet+ printers
- 4 Domino Jet Array printers
- 16 Domino K100 printers
- 8 Domino K150 printers
- 8 Domino K200 printers
- 4 Domino L400 printers
- Domino M-Series print and apply
- Domino S-Series lasers
- Other third party printer support available

Editor GT Floor Standing Controller





# Domino Worldwide

Through an extensive global network of subsidiaries and distributors, Domino operates in over 120 countries. This network offers customers both sales support and access to highly skilled service teams, providing technical support packages to suit the varying production environments and customer requirements across the world.

## AUSTRALIA

Domino (Australia) Pty. Ltd.  
1, Neutron Place  
Rowville  
Melbourne  
Victoria 3178  
Australia  
Tel: + 61 3 9764 8485

## BELGIUM

Domino Benelux  
Uitbreidingstraat 84/3  
B-2600 Berchem  
Belgium  
Tel: +32 (0)3 218 2028

## CANADA

Domino Printing Solutions Inc.  
2751 Coventry Road  
Oakville  
Ontario  
L6H 5V9  
Tel: + 1 800 387 7972

## CHINA

Domino Coding Ltd.  
No. 1150 Yun Qiao Road  
Jin Qiao Export  
Processing Zone  
Pudong  
Shanghai 201206  
Tel: + 86 21 5050 9999

## FRANCE

Domino SAS  
ZA du Bel Air  
2 Rue Mege Mouries  
78120 Rambouillet  
Tel: + 33 1 3046 5678

## GERMANY

Domino Deutschland GmbH  
Lorenz-Schott-Strasse 3  
55252 Mainz-Kastel  
Tel: + 49 61 34 25 050

## MEXICO

Domino Printing Mexico  
SA de CV  
Calle 3 No. 47 Local 6F Col.  
Industrial Naucalpan  
53370 Edo. De México  
Tel: + 52 55 5576 7979

## NETHERLANDS

Domino Benelux  
Ambachtsweg 8  
3991 LH Houten  
Tel: + 31 30 636 3333

## SPAIN

Domino Amjet Ibérica S.A.  
Avenida Fuente Nueva No 14  
28700 S.S. de los Reyes  
Madrid  
Tel: + 34 91 654 2141

## UNITED KINGDOM

Domino UK Ltd  
(Headquarters)  
Bar Hill  
Cambridge  
CB23 8TU  
Tel: + 44 1954 782 551

## UNITED STATES OF AMERICA

Domino Amjet, Inc.  
1290 Lakeside Drive  
Gurnee  
Illinois 60031  
Tel: + 1 800 486 7414

*For all other territories please review our website in order to determine your local Domino representative.*

[www.domino-printing.com](http://www.domino-printing.com)

EGT/0508 Due to our policy of continuous improvement, specifications are subject to change without notice. E&OE.